



Advanced Orthopedic
.....
& Sports Medicine Specialists

Dr. Presley Swann

Your Knee Replacement Guide





Advanced Orthopedic
& Sports Medicine Specialists

Dr. Presley Swann

Contents

1. Types of Joint replacements
 - a. Partial Knee Arthroplasty
 - b. Total Knee Arthroplasty
 - i. Risks of surgery
2. Getting Ready for Surgery
 - a. Tasks
3. Surgery:
 - a. 1 week prior to surgery
 - b. 5 days prior to surgery
 - c. The night before surgery
 - d. The day of surgery
4. Outpatient (going home the same day) vs. Inpatient (staying overnight)
 - a. Inpatient
 - b. Outpatient
5. What to expect when I get home?
 - a. Pain control, nausea control, constipation control, blood clot prevention
 - b. Home health
 - i. PT/OT
 - c. Wound care
 - d. Home exercise Program
 - e. Frequently Asked Questions
6. Nursing and Physical Therapy Information
7. Contact information



Advanced Orthopedic
& Sports Medicine Specialists

Dr. Presley Swann

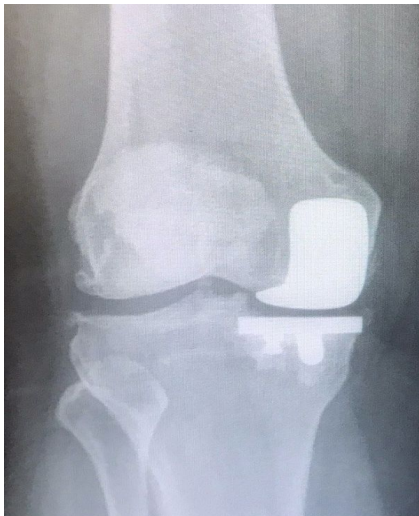
Types of Knee Replacements

For more information on the types of
knee replacements, visit our website

<http://coloradokneeandhip.com>

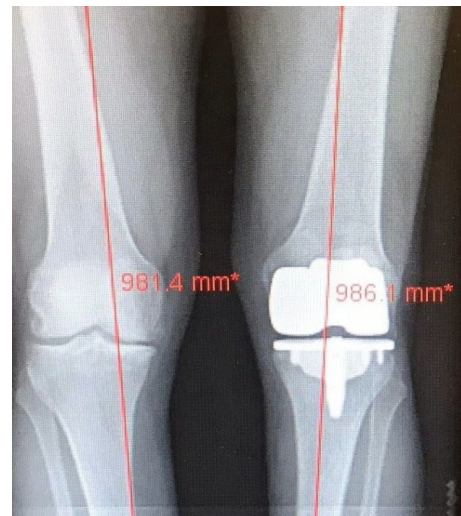
Partial Knee Replacement

Partial knee replacement (Uni-compartmental knee) involves only resurfacing the part of the knee that is affected by arthritis. This is either the medial, lateral, or patella-femoral compartment of the knee. By minimally resurfacing only part of the knee, Dr. Swann is able to restore natural motion and eliminate pain while keeping all native ligaments intact. If you are a partial knee candidate



Total Knee Replacement

The knee is one of the most frequently impacted joints. A total knee procedure involves replacing the worn out bone and cartilage sections of the knee in all three compartments. Recovery and pain management remain some of the biggest challenges of total knee arthroplasty (TKA).





Advanced Orthopedic
& Sports Medicine Specialists
Dr. Presley Swann

Risks of a knee replacement

Risks of Joint Replacement:

- Infection (<1%)
 - Weight
 - Dental health is important. Obtain all dental work necessary prior to surgery. **No routine dental work or cleanings for 6 months after surgery unless absolutely necessary.** You will need antibiotics 1 hour before every dental procedure (even cleanings) lifetime. This precaution also applies to any other invasive medical procedure such as colonoscopy or urologic procedures. **ALL medical professionals should be aware of your joint replacement.** You may call us for antibiotic prescriptions.
 - Quit smoking to reduce risk of wound problems and infection
- Bleeding requiring transfusions
 - Risk is very low unless you are anemic (low blood count) prior to surgery.
- Blood clots
 - Risk is present with any operation of the legs.
 - May cause death in extremely rare cases (1/10,000) if blood clots travels from legs up to the lungs and blocks flow to the heart (pulmonary embolism)
 - Will be placed on aspirin or Eliquis 2x day for 1 month after surgery to minimize this risk.
- STIFFNESS
 - Success of surgery is dependent on how well you do your therapy!
 - The newly operated knee will want to scar down. If you allow this to happen you will not be able to bend or straighten your knee fully and will be painful the rest of your life! This cannot be fixed without another surgery and is not guaranteed to help.
 - The key is preventing the scar from developing during the 3 months after surgery.
 - I expect 90% of your preoperative range of motion back by 1 month (typically about 100-110 degrees of flexion) and full motion by 3 months.



Advanced Orthopedic
.....
& Sports Medicine Specialists
Dr. Presley Swann

Getting Ready for Surgery

Tasks

- Make sure you have some help at home to aid you with your activities of daily living.
- Most people take approximately 6-12 weeks off from their job depending on the type of job. However, some people will get back to work sooner if their job is not too labor intensive.
 - You should be in contact with your employer and bring any paperwork that needs to be completed for time off prior to your surgery.
- We also recommend arranging your house to be as safe as possible to avoid falls.
 - If possible, avoiding stairs is helpful but is not mandatory. The therapist will teach you how to manage stairs before you leave the hospital.
- You will also be scheduled for a pre-op appointment with Dr. Swann's Physician Assistant, Caleb Jennings.
 - At this appointment he will go over the surgery with you, answer any questions that you may have and sign the consent for the operation.





Advanced Orthopedic
& Sports Medicine Specialists
Dr. Presley Swann

Surgery

7 days prior to operation

- At this time you will stop taking all blood thinning medications. This can be a long list of medications and if you have any questions, please don't hesitate to call. You will also go over this with the nursing staff before your surgery
- The most common blood thinning medications are as follows:
 - Aspirin
 - NSAIDs including but not limited to:
 - Ibuprofen
 - Advil
 - Aleve
 - Diclofenac
 - Celebrex (celecoxib)
 - Mobic (meloxicam)
 - Vitamin E
- ******IT IS ESSENTIAL THAT YOUR PRIMARY CARE PROVIDER, PULMONOLOGIST, HEMATOLOGIST, AND/OR CARDIOLOGIST CLEAR YOU TO STOP TAKING OTHER BLOOD THINNERS.** These include but are not limited to:
 - Coumadin
 - Xarelto
 - Plavix
 - Eliquis
 - Pradaxa
 - These medications are used to treat a variety of conditions including a history of atrial fibrillation, a history of a heart attack/stroke, and/or a history of blood clots or pulmonary embolism.
- **If you take these medications, special instructions will be given to you before your surgery.**



Advanced Orthopedic
& Sports Medicine Specialists
Dr. Presley Swann

Surgery

3 days prior to surgery

- At this time you will start using a special soap. This soap is called chlorhexidine also known as Hibiclens.
 - This soap removes unwanted bacteria that grows on your skin which helps decrease your risk of infection after your surgery.
- Directions for use:
 - You will use the soap when you shower once **daily**.
 - You will shower normally with soap and water. Wash all the normal soap off of your body completely.
 - Turn the shower off.
 - Scrub your entire body with this soap (**other than your face**)
 - You will wait 3 minutes with the water off.
 - Afterwards, you will proceed with rinsing the soap off of your body completely.
 - After this, you will NOT use any regular soap on your body.
 - Turn the shower off and dry off as you normally would.
 - Make sure to use a clean towel after every shower.
 - Some hospitals will supply you with wipes. This is an alternative way of doing the soap washes. Please follow their instructions in regards to this.

3 days prior to surgery

- It is required that you change your sheets daily 3 days prior to surgery to help keep your body free of unwanted bacteria.



Advanced Orthopedic
& Sports Medicine Specialists
Dr. Presley Swann

Surgery

The Night Before Surgery

- The night before surgery, you will want to eat a well balanced meal.
 - After midnight, you will not be allowed to eat any food.
- You should take your medications as instructed the night before unless you are instructed otherwise by your primary care provider, the hospital staff, or Dr. Swann's team.
- You will drink a special pre-surgery drink 4 hours before surgery. If this was not given to you, you can drink 10 oz. of Gatorade. If you are a diabetic, this will not be given to you.
 - If you have any questions regarding your medications, please feel free to reach out to Dr. Swann's office or your primary care provider.
- It is expected to be nervous and anxious before surgery.
 - You want to try to get to bed early and get a good night's rest before showing up the morning of surgery.



Advanced Orthopedic
& Sports Medicine Specialists
Dr. Presley Swann

THE DAY OF SURGERY

The morning of surgery

- Make sure that you do not eat anything the morning of your surgery. (You will hear people telling you to make sure you are “NPO”)
 - Depending on the hospital policy, some hospitals allow you to have water up until 3 hours prior to your surgery. Please check with the hospital and/or surgery center to verify this policy.
- You will be allowed to take certain medications the morning of surgery with a **small sip of water**. You will be contacted before surgery by someone from the hospital to tell you what medications to take and what medications not to take.
 - Some medications that typically are NOT taken the morning of surgery include ACEI and ARBs. These are medication that is used to help control your blood pressure. Some common medications include:
 - Lisinopril
 - Benazapril
 - Losartan
 - All medications decisions are made on a case-by-case basis and you will be instructed on which ones to take.



Advanced Orthopedic
& Sports Medicine Specialists
Dr. Presley Swann

THE DAY OF SURGERY

The morning of surgery

- You will show up in the pre-operative area at the designated facility.
- Timing:
 - Typically with joint replacement surgery, most hospitals would like you to show up 2 ½ hours prior to the scheduled surgery time.
- You will be checked in, after which a nurse will ask you questions in regards to allergies, what side of the body is undergoing surgery and start an IV access. These questions may seem redundant, but they are necessary for your safety.
- Anesthesia
 - You will then meet with an anesthesiologist.
 - They will discuss with you what type of anesthesia will be given and will have you sign their consent forms.
 - Typically with joint replacement, a spinal anesthetic is used which is very safe and effective.
 - Do not worry, you typically will not remember this part.
- Surgery
 - The surgery will typically take about 1 to 1.5 hour(s).
 - Please visit our website for a demonstration of your surgery
 - <http://coloradokneeandhip.com>.



Advanced Orthopedic
& Sports Medicine Specialists
Dr. Presley Swann

Inpatient vs. Outpatient

- ❖ Dr. Swann will decide if you are a candidate for an outpatient total joint replacement versus a one night stay total knee replacement
- ❖ The main goal is to make sure you are safe to discharge home on the same day or if you need a night in the hospital for further monitoring and observation
- ❖ There are multiple factors involved in this decision and he will do what he feels is safest for you





Advanced Orthopedic
& Sports Medicine Specialists
Dr. Presley Swann

Inpatient

- If the decision was made for a one night stay or if your surgery is done later in the day, you will typically spend 1 night in the hospital.
 - During this time, you will be given a private room on the Orthopedics floor.
 - There may be a “Hospitalist” or medical doctor that will come and see you during your stay.
 - You will participate in therapy the day of surgery as well as the day you leave.
 - The PT and OT will show you how to manage stairs and make sure you are safe for discharge home
 - You will have a case manager at the hospital who will help get all of the discharge planning ready for you including home health therapy, possibly a home health nurse and ensure that you have all the equipment needed for discharge.
- Please refer to the outpatient discharge instructions once you are discharged.



**Advanced Orthopedic
& Sports Medicine Specialists**
Dr. Presley Swann

Outpatient

GOALS:

First 2 weeks goals are pain control and swelling control which go hand in hand along with getting your ROM of the knee. You should rest with elevation and icing the knee most of the day. Do your exercises and then elevate and ice. If you are up walking around a lot, your knee will swell which causes pain and problems getting your motion. You will be discharged home and home PT will begin therapy the next day. Your first night is just about getting comfortable and getting sleep. The goals of pain control are comfortable but not lack of pain.

TIMELINE OF YOUR SURGERY DAY

- 1) Show up on time to pre op area where you will be premedicated, IV placed and consent signed**
- 2) Dr. Swann will meet you and sign your side to be done**
- 3) You will be brought to the OR where you will receive a spinal anesthetic and block to the knee**
- 4) Surgery takes around an 1 hour to 1 .5 hours**
- 5) You will be brought to PACU and then transferred to a Room and will have PT see you**
- 6) Your goals are 100 feet ambulation safely with walker**
- 7) You will rest for 2-3 hours and all paperwork completed prior to discharge**
- 8) Physical therapy will assess again with stairs and then you can discharge home (this is only if needed - some patients are able discharge after the 1st physical therapy session)**
- 9) You will go home and simply rest**
- 10) Therapy will see you the following day for your first PT session**
- 11) You will know when your block is starting to wear off at this time take 10 mg Oxycodone to prevent pain getting ahead.**



**Advanced Orthopedic
& Sports Medicine Specialists**
Dr. Presley Swann

Outpatient

PAIN CONTROL

DO NOT WAIT UNTIL YOUR PAIN IS SEVERE. Give your nurse some lead time to get you the medications you need, as they are also taking care of other patients. You should be taking scheduled Tylenol, and either Celebrex or Meloxicam based on insurance coverage. Only if still painful then take the narcotic below.

- Oral Narcotics
 - Oxycodone - strong, immediate relief every 3-6 hours
 - Ultram 50mg- This medication is for moderate pain. This medication should be taken as prescribed and should not be taken if you have a history of epilepsy. This medication should be scheduled as well.
- Anti-inflammatory
 - Meloxicam- This medication is in the class of NSAIDs and should only be taken if okay by your medical doctors. This medication is taken for 2 weeks scheduled.
- Muscle Relaxer:
 - Robaxin- This medication can be taken three times daily for muscle spasms.
- Pain medication:
 - Acetaminophen (Tylenol) - This medication should be take scheduled. You should take 1000 mg every 8 hours. You should not take this medication if you have significant liver disease.

NAUSEA CONTROL

All of your control options are listed below.

- Scopolamine Patch
 - 1 patch behind the ear the night before surgery, change once every 3 days. If not having any feeling of N/V then ok to stop the scopolamine patches once you are home
- Zofran
 - This medication should only be taken as needed for nausea and/or vomiting which is a common side effect of pain medication and anesthesia.

CONSTIPATION

- Constipation is a result of pain meds and dehydration.
- Senna-S 2 tabs p.o. q.h.s. *unless* BMs are regular. Script is called in to pharmacy prior to surgery.
- No patient should go more than 5 days without a BM.
- Hydrate, hydrate, hydrate – 1 gallon of water daily.
- Should drink apple juice or prune juice if having trouble.
- Dulcolax suppositories p.r.n.
- MiraLAX p.o. to effect. Take as directed on label.
- Call/email us if the patient is having problems.



**Advanced Orthopedic
& Sports Medicine Specialists**
Dr. Presley Swann

Outpatient

PREVENTING BLOOD CLOTS (DVT-Deep Venous Thrombosis)

- Aspirin
 - Aspirin 81 mg 2x day for 4 weeks unless you are at increased risk for blood clots, in which case you will be placed on Eliquis 2.5mg.
- Compression stockings (TED hose)
 - These should be worn off an on mainly for swelling purposes.
 - Wear until first post-op appointment
- Compression devices
 - Placed on the lower legs while in bed at the hospital
 - Intermittently squeezes your legs to propel the blood in your legs back to your heart.
 - May remove when out of bed, but replace them when you get back in bed.
- Ankle pumps
 - At least 10 repetitions every hour.
 - The muscle contractions also squeeze the blood back up to your heart.

BATHING

- You will sponge bathe for the first 2 days after surgery while the dressing is on.
- You may shower 48 hours after surgery. The dressing you have is waterproof but covering with seran wrap could help keep the integrity of the dressing. No soaking of the incision.

WOUND CARE

- Typically, you will have an ACE wrap placed for swelling purposes after surgery.
 - After post op day two, you may remove this and shower.
 - You will have a dressing that is white overlying the incision. It is okay to shower with this on.
 - If this starts to come off or gets wet, you may remove this dressing but make sure you leave the Dermabond (glue) mesh in place. This will stay on until follow up. It is okay to shower with this on and have water run over this.
 - If you have staples, keep the staples clean and dry. It is okay to shower on post op day two, however you should wrap the incision with plastic wrap or a special covering that can be purchased at multiple drug retail stores



Advanced Orthopedic
& Sports Medicine Specialists
Dr. Presley Swann

Outpatient

CARE AND APPAREANCE OF YOUR KNEE:

- When you get home, you should **keep your wound clean and dry**. Gauze can be purchased at your local drug store. You should avoid applying any ointments, salves, or lotions of any kind.
- Shower is ok
 - When you shower, sit on a stool for support. **Do not** try to stand or balance mostly on 1 foot.
 - **Do not** immerse your knee under water in the tub for any reason. (Hot tubs are **off limits** for 6 weeks after surgery.)
 - If you lie in a bath, keep your knee out of the water for 4 weeks after your surgery.
- After surgery, your knee will swell and look puffy. In general, this should improve each day. It tends to get worse the more you exercise and definitely the more you are up.
- The incision should be dry and not have drainage coming from it except in small spots by the staples. Any active bleeding or worrisome drainage should be reported to our office.
- The skin around the incision and the knee may be light red and slightly warm. There may also be bruising on the shin and knee, especially in the back of the leg, that may get somewhat worse over time during the first couple of weeks.
 - **Any intense redness or heat with new pain, fever, swelling, or stiffness should be reported.**
- **Icing of your knee is very helpful to reduce swelling and pain.** You should use the Vascutherm/GameReady/Cryocuff if you have this available. You may also use the ice packs you used in the hospital, commercial ice packs, or a large Ziploc or tied plastic bag filled with ice draped over the knee. Icing the shin and thigh can also be helpful for comfort and swelling, especially if there is bruising.
 - Icing should be done after exercises and throughout the day to treat swelling and soothe the knee. Do not apply ice directly to the skin. Icing should be done for no longer than 20 minutes at a time. Note excessive lingering of redness in the skin, which can be an indication you are icing too long or causing frostbite to the skin.

ACTIVITY WHEN YOU GET HOME:

- Be sure to drink plenty of fluids.
 - Avoid lots of caffeine, as this can cause dehydration.
 - Fluids are important, as they help prevent the constipation effects of the pain medications.
- Eat a well balanced diet.



Advanced Orthopedic
& Sports Medicine Specialists
Dr. Presley Swann

Home Exercise Program

REHABILITATION

Surgery was half the battle. The other half starts now! It will begin with aggressive physical therapy. The main goals of physical therapy are:

- **FULL KNEE EXTENSION**
 - You cannot walk normally without the knee straight.
 - The knee was fully straight in the operating room. The knee will want to scar and lock you in the position you leave it in.
 - If you do not work hard at keeping it straight and the scar sets in, I will not be able to get it straightened again without another surgery.
- **KNEE FLEXION**
 - Use your other knee as a guide to measure how much you should be able to bend your new knee (if your other knee is normal that is).
 - You should get at least 90 degrees before you leave the hospital.
 - Your physical therapist will show you important exercises for this.

There are a couple of easy passive things you can do to help achieve these goals without work.

- Place a pillow under your **ankle**
 - This elevates your leg so that there is a space under your knee. This will allow gravity and the weight of your leg to help keep your knee fully extended.
 - You can also use buttock and thigh muscles to push down on the pillow to get your knee even straighter.
- Minimize the amount of time your leg is hanging down, dependent to gravity, when you are out of bed. You should spend no more than 45 minutes with the leg down. If you are sitting in a chair, prop it up to minimize swelling in your knee and ankle.
- **DO NOT** fall behind with pain control. Pain will inhibit you from maximizing your rehabilitation and may compromise your range of motion and outcome!



Advanced Orthopedic
& Sports Medicine Specialists
Dr. Presley Swann

Frequently Asked Questions

When can I drive?

Driving can usually resume at 8 weeks after surgery. You must be off all narcotics, be quick and strong enough to step on the brake (especially if you were operated on your right leg!). You must be able to protect yourself and others. Resuming driving can be discussed at your follow up visit. If it is a left knee and you drive an automatic, you can drive earlier if all the above mentioned criteria is met.

How long will I be out of work?

It depends on what type of work you do. You will need about 6-12 weeks on average. If you have a sedentary job, you may return sooner than others who need to be on their feet constantly. This can be discussed at your 2-week appointment.

When can I fly in an airplane?

Flying may resume at 4-6 days. Try to sit in an aisle seat and make arrangements for luggage and connections. Blood clots are the biggest concern, so you **MUST** do ankle pumps every 15 minutes, and walk about the plane every 30 minutes.

********How long after surgery will I need to have antibiotic prophylaxis prior to dental work or any other invasive procedure (i.e. colonoscopy, urologic, or upper GI procedures)?***

This will be needed for the rest of your life. I ask that you DO NOT have any dental work for at least the first 6 months following your surgery. You should be given Amoxicillin 2g 30 minutes before the procedure or another antibiotic if you are allergic to penicillin*****



Advanced Orthopedic
& Sports Medicine Specialists
Dr. Presley Swann

Physical Therapy and Nursing Guide for total and partial knee replacements

WOUND CARE

- Almost all wounds are now glued shut with Dermabond and absorbable sutures underneath. These wounds are usually water tight, but if there is drainage they are clearly not water tight yet.
- The wound is typically sealed in 7-10 days. May use soap and water in the shower to clean the wound without scrubbing the incision itself and pat the wound dry.
- Once the wound is no longer draining, it does not need to be covered.
- Call or email if the wound does not look healed in 10 days.
- You may see some black scabs or glue residue. This is normal.
- By 4 weeks postop, encourage the use of moisturizer with Vitamin E around the wound to help keep it healthy looking and supple.

IF THERE ARE STAPLES (RARELY)...

- Clean staples daily with ChloroPrep or alcohol swabs.
- Do not get the incision wet in the shower. Use BLUE RUBBER SHOWER SLEEVE until staples are removed.
- They will be removed at your first post-operative appointment.

AFTER STAPLES ARE REMOVED

- May get knee wet in shower 24 hours after staples are removed.
- May bathe in tub at 3 weeks.
- **CALL ME with any worsening wound redness, drainage, swelling, or increased pain or fevers.**

DVT PROPHYLAXIS

- Aspirin 81 mg 2x day for 1 month Aspirin unless you are at increased risk for blood clots, in which case you will be placed on Eliquis 2.5mg.



Advanced Orthopedic
& Sports Medicine Specialists
Dr. Presley Swann

Physical Therapy and Nursing Guide for total and partial knee replacements

PAIN CONTROL

- Most patients are sent home with:
 - Oxycodone 5 mg 1-3 tablets p.o. q 4-6h p.r.n.
 - Anti-inflammatory (NSAIDS) for swelling (if they were on one before, resume the same).
 - Otherwise they should take Aleve (naproxen) 2 tabs b.i.d. with breakfast and dinner. Over the counter strength is sufficient.
 - Tylenol and Ultram
 - No NSAIDS in those with renal insufficiency or allergy.
- Notify us if pain control is inadequate.

NAUSEA CONTROL

- Zofran should have been given to patient upon discharge
- Take pain meds on full stomach if possible.
- Pain meds are seen to directly cause nausea, then please call/email us so that we can adjust pain meds for them.

CONSTIPATION PREVENTION

- Constipation is a result of pain meds and dehydration.
- Senna-S 2 tabs p.o. q.h.s. *unless* BMs are regular. Script is called in to pharmacy prior to surgery.
- No patient should go more than 5 days without a BM.
- Hydrate, hydrate, hydrate – 1 gallon of water daily.
- Should drink apple juice or prune juice if having trouble.
- Dulcolax suppositories p.r.n.
- MiraLAX p.o. to effect. Take as directed on label.
- Call/email us if the patient is having problems.



Advanced Orthopedic
& Sports Medicine Specialists
Dr. Presley Swann

Physical Therapy and Nursing Guide for total and partial knee replacements

LEG / KNEE SWELLING

- Goal the first 2 weeks postop is to control swelling.
- If you control swelling, you control pain, improve range of motion, and decrease side effects from narcotics. VERY IMPORTANT and PREVENTABLE.
- **MINIMIZE LEG DEPENDENT (TO GRAVITY) TIME TO 45-60 MINUTES AT A TIME.**
- Keep leg up whenever possible, e.g. eating a meal, watching TV).
- Once the foot is down, the knee will swell.
- Encourage icing with Cryocuff/Vascutherm/GameReady (instruct on use) every 2-3 hours for the first 2 weeks.
 - Apply Cryocuff on knee with the bladder empty, then fill with ice bucket to allow compression.
 - Remove after 30 minutes since it will be warm by then. Do not keep it on beyond that or overnight since will be a heat pack then.
 - Recharge and reapply in 2-3 hours while awake.
- If very swollen, they may need to back off of PT for a day or two if the swelling is severe.
- They should never push PT stretches to the point of severe pain as that will cause more swelling and will set them back.

IDENTIFYING DVT

Sudden increase in swelling after little activity could be a sign of a **DVT**.

- HOMAN's sign is NOT reliable and should not be used as that may propagate the DVT.
- IF THEY ALSO HAVE SHORTNESS OF BREATH OR CHEST PAIN THEY MAY HAVE A PULMONARY EMBOLUS! CALL ME or advise going to the ER.
- They will need an ultrasound to rule out the DVT. If it is positive, they will simply need Coumadin for 3 months. If they have a PE, they will need 6 months of Coumadin.
- The initial treatment is elevation to minimize the pain of the swelling and to make sure they are therapeutic on Coumadin (Goal INR 1.5-2.5).



**Advanced Orthopedic
& Sports Medicine Specialists**
Dr. Presley Swann

Physical Therapy and Nursing Guide for total and partial knee replacements

PHYSICAL THERAPY (5x/week x 2 weeks then 3x/week x 1 week)

- Must be seen within 48 hours of surgery
 - Most patients are discharged home by Tuesday or Wednesday
 - Please arrange to start therapy day after discharge
- **All patients receive a 2 page set of instructions titled “Dr. Swann’s Knee Exercises”.** See attached.
 - **Please read it and ensure patients are doing them correctly.**
 - **They have been taught these exercises pre-op and in the hospital. Consistency is important for compliance.**
 - **These are mandatory for 3 months and take precedence over all other exercises.**
- Perform home safety evaluation and recommendation.

This is a good website for exercises that you can do on your own: [Knee Exercises](#)

“THE ROUTINE”

“Sit and Scoot” and “Sit and Straighten” exercises are done 3x/day after each meal.

- Eat meal.
 - Take pain meds after meal on full stomach to avoid nausea.
 - Wait 30 minutes to allow pain meds to take effect.
 - Do 1 set of 10 repetitions of “Sit and Scoot” and “Sit and Straighten” each. Each rep is held for 30 seconds. Avoid pushing to extreme pain.
 - Immediately ice and elevate with Cryocuff to prevent swelling.
-



Advanced Orthopedic
& Sports Medicine Specialists
Dr. Presley Swann

Physical Therapy and Nursing Guide for total and partial knee replacements

Range of Motion

- ROM measurements are relative
 - I measure them supine with the hip and knee flexed actively without pulling or pushing using a goniometer.
- Goals:
 - Full terminal extension
 - Flexion to at least 90 degrees by 2 weeks postop.
 - Flexion to at least 110 degrees by 4 weeks postop.
- **NEVER PERFORM PASSIVE ROM ON PATIENT!**
 - Be careful not to cause the wound to split or rupture the patellar tendon with early aggressive passive knee flexion!
 - This can cause severe pain and set the patient back permanently!
- **NEVER HAVE THE PATIENT PUSH THEMSELVES TO THE POINT OF EXTREME PAIN!**
 - They will swell if they do.
 - It will set them back if they swell.
 - Have them push until they feel the muscles stretching just before the pain.
 - Maintain full extension and at least 90 degrees for the first 2 weeks until the swelling is controlled. Then they can be a little more aggressive to reach 110 degrees.
- **TERMINAL KNEE EXTENSION IS MOST IMPORTANT**
 - Once lost, I cannot get it back and it will be permanent!
 - Pillow under the ankle while in bed to help keep knees extended
- ***Severe knee swelling may prevent progress!*** May need to back off on frequency and intensity of exercises if swelling is severe. Do not push a patient too hard with a swollen painful knee. It is better to allow it to subside before progressing!

STRENGTHENING

- Quad sets
 - Active knee extension
 - Straight leg raises
- Hamstring/glute sets

GAIT

- Gait training with walker
 - May graduate to a cane only under supervision of physical therapist.
- Stairs
 - “Up with the good, down with the bad”
 - Progress to reciprocating steps



**Advanced Orthopedic
& Sports Medicine Specialists**
Dr. Presley Swann

Contact Information

Welcome to Advanced Orthopedic and Sports Medicine. Below, please find the names and contact information of your Orthopedic Care Team. If at any time you have questions or concerns, please feel free to utilize the direct numbers and/or email addresses listed. When calling, you may reach a voicemail box where messages are checked daily and typically addressed within 24 business hours. If you have a question or concern that needs immediate attention or cannot be left on voicemail, please call our main line at (303) 344-9090. You may also utilize our mobile medical colleague Dispatch Health at (303) 500-1518 for more immediate attention. Any emergent or life-threatening issue will require visiting the emergency department. We make every effort to address inquiries left on voicemail or email within 24 business hours. More information can be found on our website

Thank you for allowing us to participate in your care as we strive to help you BE ACTIVE.

Your Orthopedic Care Team

TITLE	CONTACT	PHONE/EMAIL
Surgery Scheduler	Randalyn Kershner	720-974-5210 randalyn.kershner@occ-ortho.com
MEDICAL ASSISTANT	Jennifer Jadick	303-344-9090 extension 3027 jennifer.jadick@occ-ortho.com
PHYSICAL THERAPIST		303-214-4595
BRACING/EQUIPMENT		303-214-4593
BILLING		303-214-4594
MEDICAL RECORDS		720-859-4031
FAX		303-344-1922